

- ① Δ = 89°55'04"
R = 10.00'
L = 15.69'
C = 14.13'
- ② Δ = 90°04'56"
R = 10.00'
L = 15.72'
C = 14.15'
- ③ Δ = 73°23'54"
R = 20.00'
L = 25.62'
C = 23.90'

ACKNOWLEDGEMENT

STATE OF UTAH } ss
COUNTY OF CARBON }

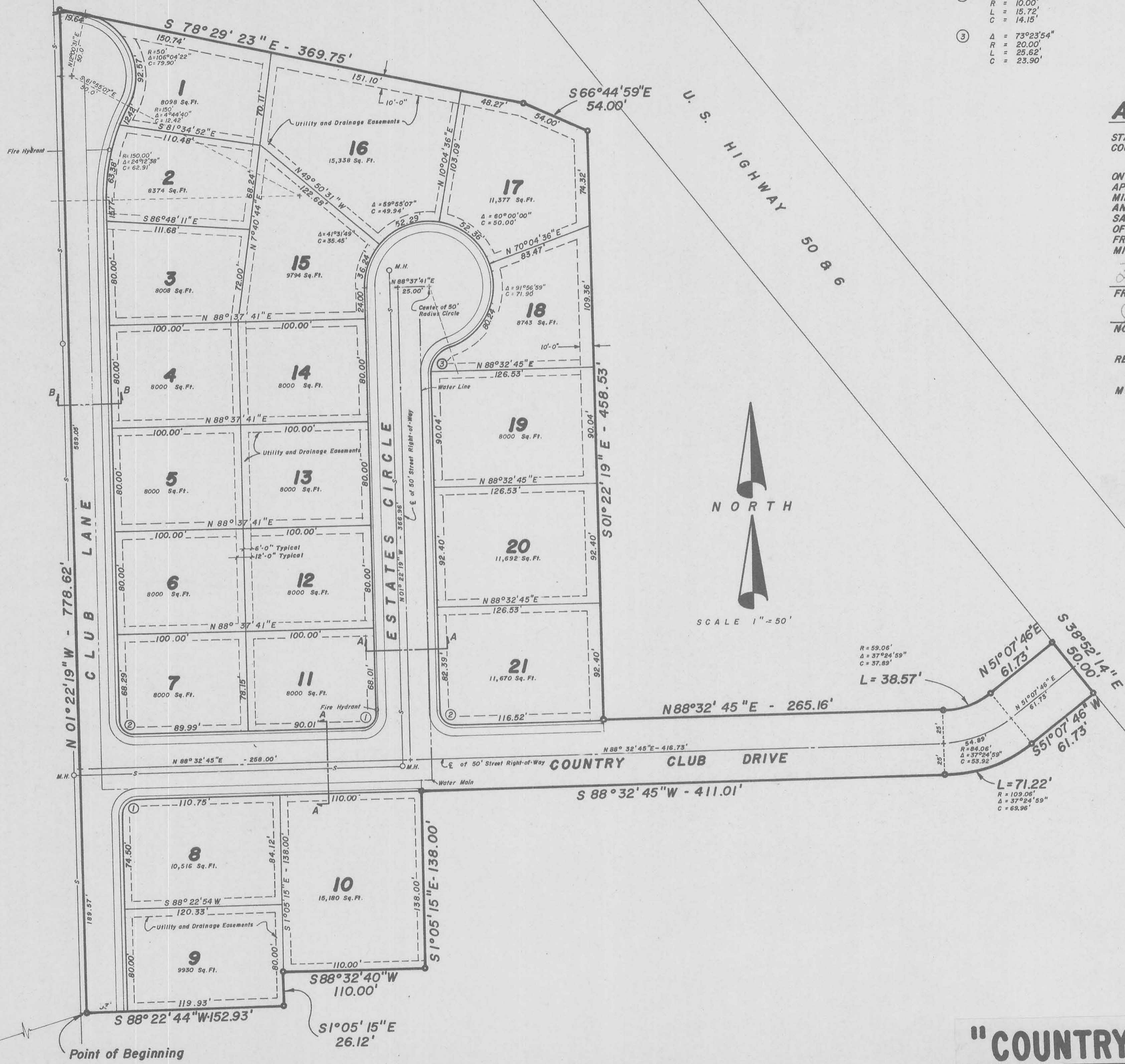
ON THE 20th DAY OF September, 1983, PERSONALLY APPEARED BEFORE ME, FRED M. JONES, DIRECTOR OF MINING, MILLING, & MANUFACTURING, INC. OF SALT LAKE CITY, UTAH; AND THAT SAID INSTRUMENT WAS SIGNED IN BEHALF OF SAID MINING, MILLING, & MANUFACTURING, INC. BY AUTHORITY OF A RESOLUTION OF ITS BOARD OF DIRECTORS; AND SAID FRED M. JONES, ACKNOWLEDGED TO ME THAT THE SAID MINING, MILLING, & MANUFACTURING, INC. EXECUTED THE SAME.

Fred M. Jones
FRED M. JONES

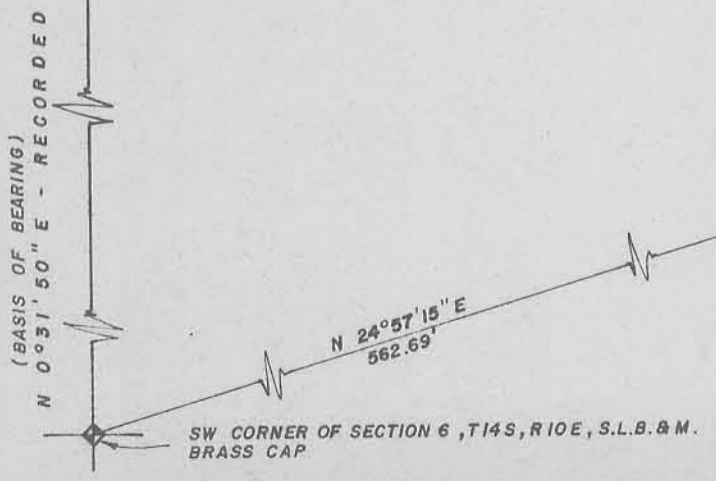
Jean A. Winters
NOTARY PUBLIC

RESIDING AT Price, Utah

MY COMMISSION EXPIRES 5-15-86



WEST 1/4 CORNER SECTION 6 BRASS CAP



000824
Booked
Abstracted
Reg. Fee 25.50

STATE OF UTAH } ss
COUNTY OF CARBON }
THE LOCKHART Co.
SEP 20 1 25 PM '83
BOOK 4 OF PLATS
PAGE 246
CARBON COUNTY CLERK

"COUNTRY CLUB ESTATES"